



Bringing Open Data to the Community

John Cruz

February 2, 2017

New Partners for Smart Growth



National Neighborhood Indicators Partnership

- Collaborative effort of Urban Institute and 32 *local data intermediaries* since 1995.
- NNIP partners help local actors use neighborhood data to improve communities through policy, planning, and advocacy
 - Trusted and engaged institutions
 - Relevant and high-quality data across topics

National Neighborhood Indicators Partnership

Better Data. Better Decisions. Better Communities.



- Rise works to “build more equitable St. Louis Neighborhoods”
- Low – moderate income home builder
 - Real Estate Consultant, predevelopment lender
- Technical assistance and consulting provider to local Community Development Orgs and Local Governments
- Data intermediary between civic data and the public



Pittsburgh

Build capacity and community

Data is people. We create data every day.

Data can change **YOUR**
life and your neighborhood.

DATA DAY

Saturday, October 22 | 10:30 am – 3:30 pm

Carnegie Library of Pittsburgh – Main
4400 Forbes Avenue, Pittsburgh PA, 15213

Explore drop-in activities about the
data in your life at this community fair!



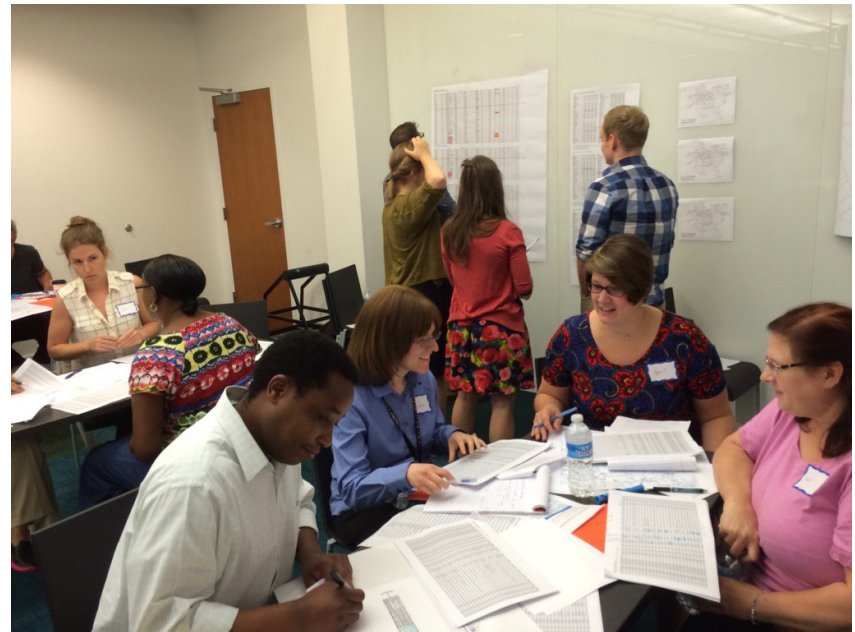
- **Get creative!** Become a data pen pal and draw a postcard to discover hidden patterns and insights in your everyday data.
- **What's your data footprint?** Find out what companies can access information about you and how you can protect it.
- **Go on an open data scavenger hunt!** Who is your council person? How many people in your neighborhood reported potholes? What restaurants passed their inspections?
- **What's your burning question about Pittsburgh?** Ask researchers, government staff and librarians.
- **Are you starting a business, writing a grant or advocating for change** in your neighborhood? Find and use community data.
- Have you ever seen a map, chart or infographic in the news?
Learn to understand and create data stories.

Presented in partnership with the University of Pittsburgh Center for Social and Urban Research, home of the Western Pennsylvania Regional Data Center, Southwestern Pennsylvania Community Profiles and Pittsburgh Today.



University of Pittsburgh

Data 101 training



Baltimore

Improve data quality & usefulness



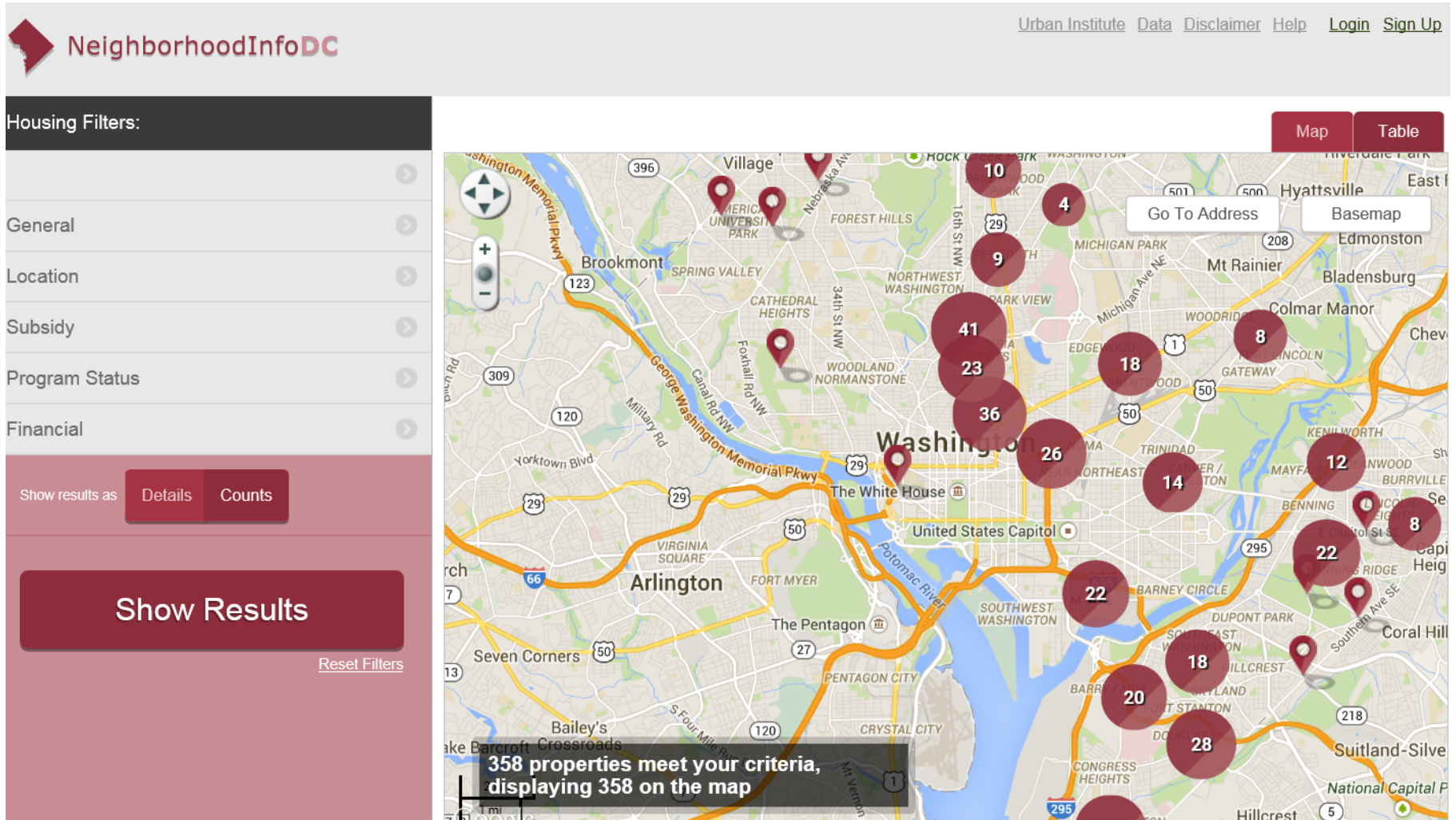
-  > [Census Demographics](#)
-  > [Housing and Community Development](#)
-  > [Children and Family Health](#)
-  > [Crime and Safety](#)
-  > [Workforce and Economic Development](#)
-  > [Sustainability](#)
-  > [Education and Youth](#)

Education and Youth		Copy	CSV
Indicator	2012		
Number of Students Ever Attended 1st - 5th Grade	528		
High School Completion Rate	80.5		
High School Dropout/Withdrawl Rate	2.1		
Kindergarten School Readiness	78.6		

Arts and Culture		Copy	CSV
Indicator	2012		
Number of Businesses that are Arts-Related per 1,000 residents	0.1		
Number of Persons with Library Cards per 1,000 Residents	237.3		
Total Employment in Arts-Related Businesses	2		

Washington, DC

Preserving affordable housing in DC



www.neighborhoodindicators.org



**NATIONAL NEIGHBORHOOD
INDICATORS PARTNERSHIP**

[My Dashboard](#)[Logout](#)[More options](#)[Home](#)[About NNIP](#)[Partners](#)[Activities](#)[Library](#)[Get Involved](#)[Data & Tech](#)

Featured Content

NNIP Partners Gather in St. Louis

NNIP hosts invitation-only periodic meetings to strengthen our peer learning network and advance the agenda of our network. Review the presentations, meeting materials and session videos...

[\[Read More\]](#)[1](#) [2](#) [3](#) [4](#)

Featured Partner »

[Minneapolis-St. Paul Partner Profile](#)

Featured Issue Area »

[Addressing Chronic Absenteeism](#)

Featured Activity »

[BNIA-JFI in the Classroom](#)

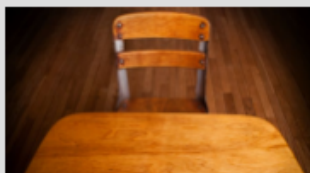


[Home](#) » [Activities](#) » **Issue Areas**

Issue Areas

NNIP Partners make important contributions to their communities on a variety of issues. The pages below highlight and organize the work NNIP partners have done, bringing together activities, published products, and cross-site projects related to each topic. We'll list additional issue areas as our partners add new examples, so check back often.

If you are interested in topics not displayed here, use the site's general search box.



Absenteeism

Absenteeism is an important indicator of how well children will perform in school. A number of our partners are helping school districts understand chronic absenteeism in their communities. [\[read more\]](#)



Affordable Housing

Community groups and policy makers have expressed a strong interest in maintaining and improving the stock of affordable housing in NNIP communities. Our partners research and report on the availability of affordable housing, the costs and benefits of gentrification, rent control, and reflect more broadly on how access to affordable housing ... [\[read more\]](#)



Arts and Culture

Among the many factors contributing to the vitality of a city, arts and culture lie at the forefront. NNIP partners have been using arts and culture indicators to inform public policy, contribute to economic development and assess educational programs. In addition to the many applications of the arts, partners are also teaching the artists. [\[read more\]](#)

Civic Tech and Data Collaborative Cross-site Project

- How can we harness the power of data and technology to increase efficiency, equity, and effectiveness of policies and programs that will benefit the most vulnerable urban residents?
- Three local pilots and four learning sites



MacArthur Foundation

Project website:

<http://www.neighborhoodindicators.org/activities/projects/civic-tech-and-data-collaborative>

CivTech St. Louis

<http://www.civtechstl.com/>



FIND YOUR TICKET

SEARCH COURT/INFO

COMMUNITY SERVICE OPTIONS

HELP

ABOUT

Everything you need in one place.

Use the search box below to find relevant court information

Enter your City...

Use the options below to find your ticket information



I have my ticket number.



I have my driver's license number.



I know where I got my ticket.

[Home](#) [Info](#) [Help](#) [About](#) [Legal Info](#) [Privacy Policy](#)

©2016-2017 CivTech St. Louis



ST. LOUIS ECONOMIC DEVELOPMENT PARTNERSHIP
serving st. louis city and county

UMSL

School of Social Work

HandsUpUnited

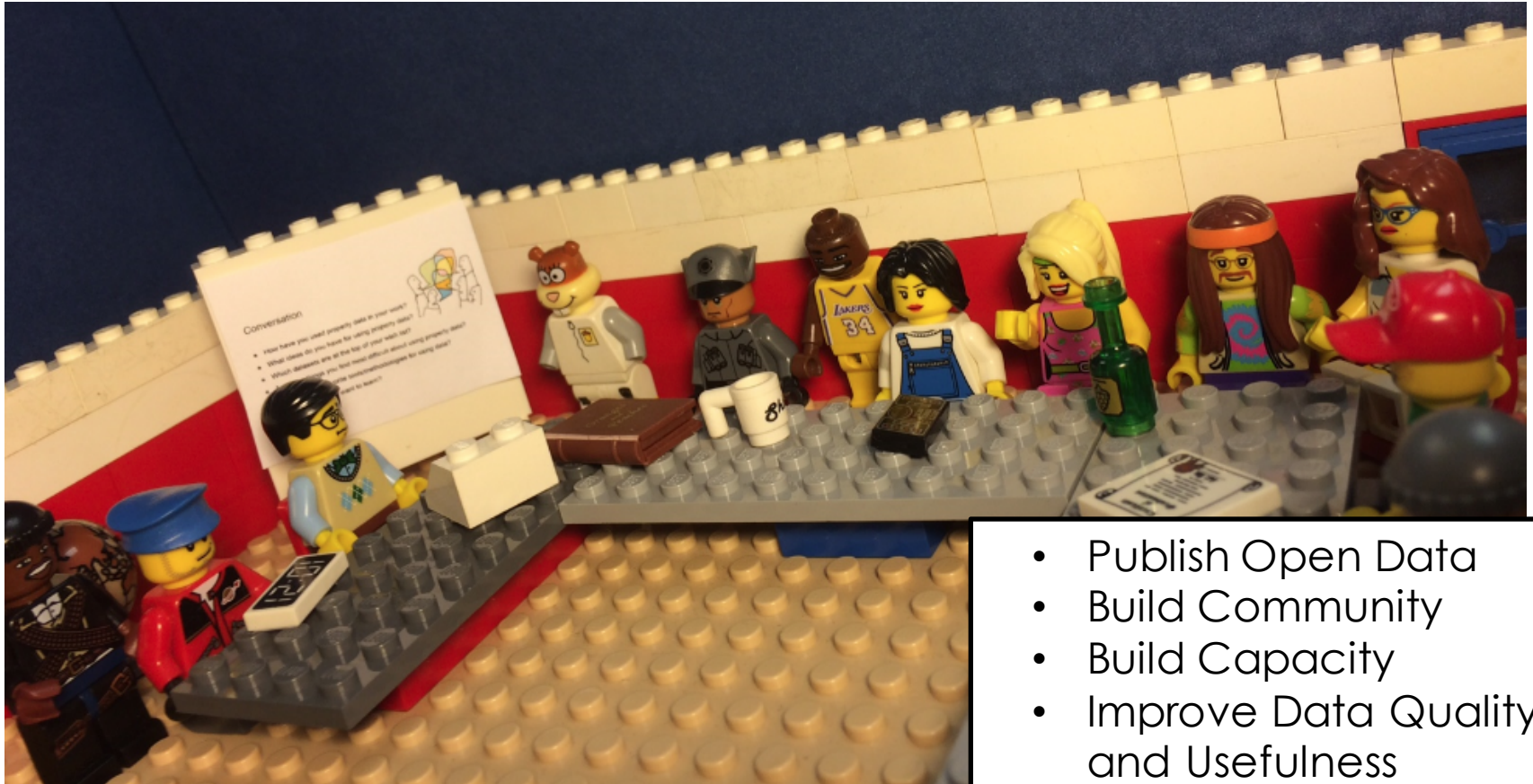
GLOBALHACK

NATIONAL NEIGHBORHOOD INDICATORS PARTNERSHIP

Want to learn more?

- Come to the “Smart Cities for Non-Techies” Panel!
- Tomorrow, 10:30 in Majestic B

Supporting Roles in Open Data



- Publish Open Data
- Build Community
- Build Capacity
- Improve Data Quality and Usefulness
- Demonstrate Value

Follow us on Twitter @NNIPHQ



NATIONAL
NEIGHBORHOOD
INDICATORS
PARTNERSHIP

For more information about NNIP, visit
www.neighborhoodindicators.org or
email Kathy Pettit at kpettit@urban.org

For more information on Open Data in St. Louis or Rise
email John Cruz at johnc@risestl.org